

## LOAD CELL FOR STEEL LININGS

### Description

The hydraulic load cell has been designed to be located at the base of reinforcement structures to measure the load that they transmit to the basement. This control is essential to ensure the safety of temporary or permanent reinforcement structures. They are generally installed on the impost of tunnels, under the support of the rib, their shape simplifies the installation.

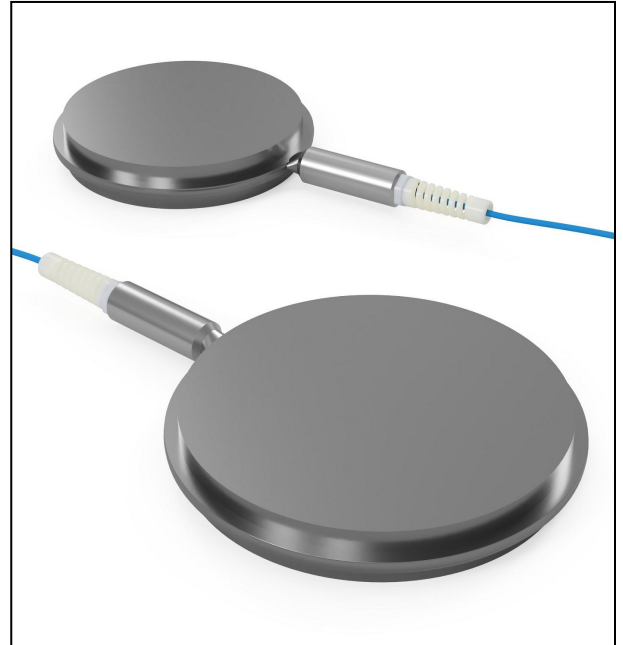
The cell consists of two round steel plates, turned and welded together in order to create a cavity, filled with a special oil and connected to an electric transducer, which transforms every change of pressure acting on the cavity in a variation of the electric signal with standard output 4÷20 mA.

All the sensor part, including cables, is isolated and protected, to prevent the concrete inside the cell; circuits and sensors are resin-coated and protected in order to preserve the functionality of the instrument in case of impact or immersion.

The reading of the electric pressure transducer data can be done through the use of a portable control unit or by means of an automatic data acquisition system designed to achieve the continuous monitoring

### Applications

- Steel cladding and tunnel linings under construction
- Struts in big open excavation
- Pile testing



### Features

- Specially designed for steel linings and struts
- Degree of protection: IP68
- Sturdy construction, also suitable for harsh environments

## Technical Specifications

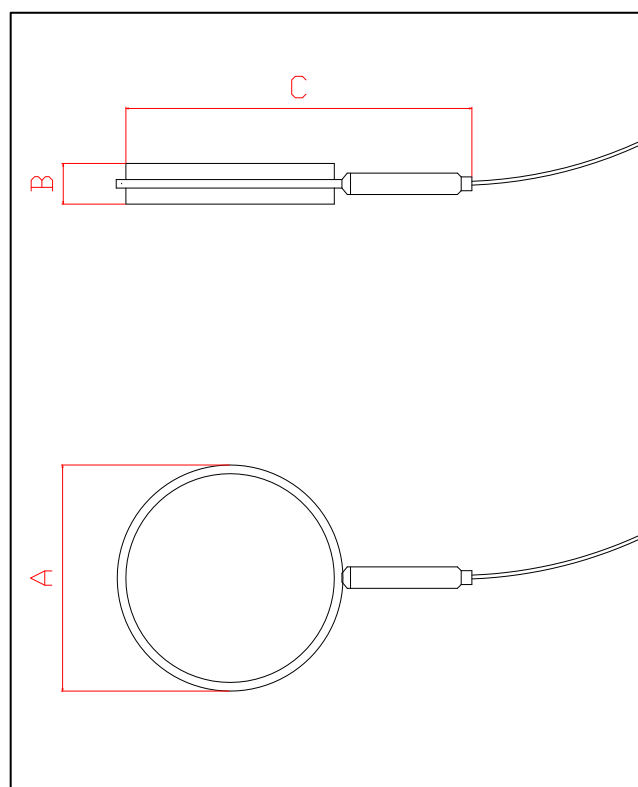
	Cella di carico da 1900 KN	Cella di carico da 3000 KN
<b>Material</b>	AISI 304 stainless steel	AISI 304 stainless steel
<b>Range</b>	1900 KN	3000 KN
<b>Diameter (A)</b>	220 mm	270 mm
<b>Thickness (B)</b>	40 mm	40 mm
<b>Total length (C)</b>	360 mm	410 mm
<b>Total accuracy</b>	< 1% F.S.	< 1% F.S.
<b>Output sensor</b>	4-20 mA, 2 wires	4-20 mA, 2 wires
<b>Power supply</b>	8-32 Vdc	8-32 Vdc
<b>Degree of protection</b>	IP 68	IP 68
<b>Operative temperature</b>	-20.....+80 °C	-20.....+80 °C

## Accessories and spare parts

- Distribution plates
- Cut to size signal cable

## Please Specify

CODE	PRODUCT DESCRIPTION
CCI-190	Load cells for steel linings, FS 1900 KN
CCI-300	Load cells for steel linings, FS 3000 KN



## For further information:

### Gestecno s.r.l.

Loc. Lanciano, 22 - 62022 Castelraimondo (MC) - Italy  
 Tel/fax: (+39) 0737.642174 - P. IVA 01137480438  
 e-mail: info@gestecno.it - WEB: www.gestecno.it