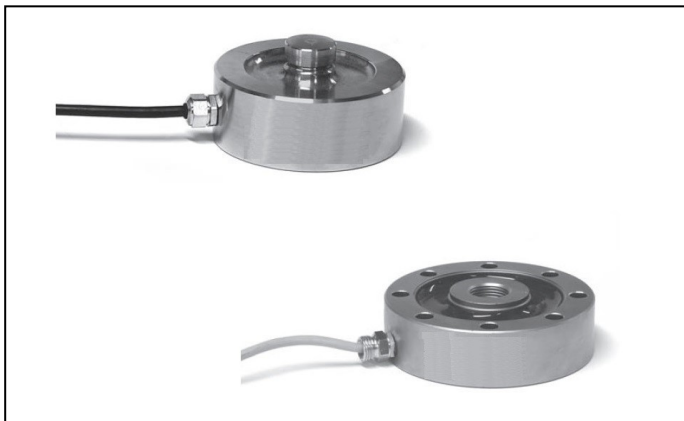


COMPRESSION LOAD CELL

Description

This type of load cells detect changes in workload to which they are subjected in different applications. The cell undergoes a deformation when it is subject to external load, the variation is detected by the strain gauge bridge located inside it, converting it into an electrical signal. The strain-gauges, electrically connected in a Wheatstone bridge configuration, detect the deformations in compression, automatically compensating the bending effect. The instruments are also compensated in temperature. In case of harsh environments, the high sensor protection allows these instruments to be used without any risk of fault or malfunction. Furthermore, Gestecno supplies the load distribution plates to be interposed between the instrument and the reference surface, in order to improve performance and reduce errors due to difficult placement.



Technical features

Range	at request
Nominal sensitivity	2 mV/V
Sensitivity tolerance	+/- 0,1% F.S.
Total accuracy	+/- 0,2% F.S.
Temperature drift (zero)	+/- 0,005% F.S./°C
Power	2-15 Vcc
Compensated temperature	-10.....+40 °C
Operating temperature	-20.....+70 °C
Material	stainless steel
Class of protection	IP67

Please specify

CODE	PRODUCT DESCRIPTION
CCC-120	Compression load cell d.160 mm, H=85 mm
CCC-200	Compression load cell d.82 mm, H=44 mm
CCC-410	Compression load cell d.132mm, H=200mm
CCC-300	Compression/tension load cell 70x25x60 mm

For further information:

Gestecno s.r.l.

Loc. Lanciano, 22 - 62022 Castelraimondo (MC) - Italy
Tel/fax: (+39) 0737.642174 - P. IVA 01137480438
e-mail: info@gestecno.it - WEB: www.gestecno.it